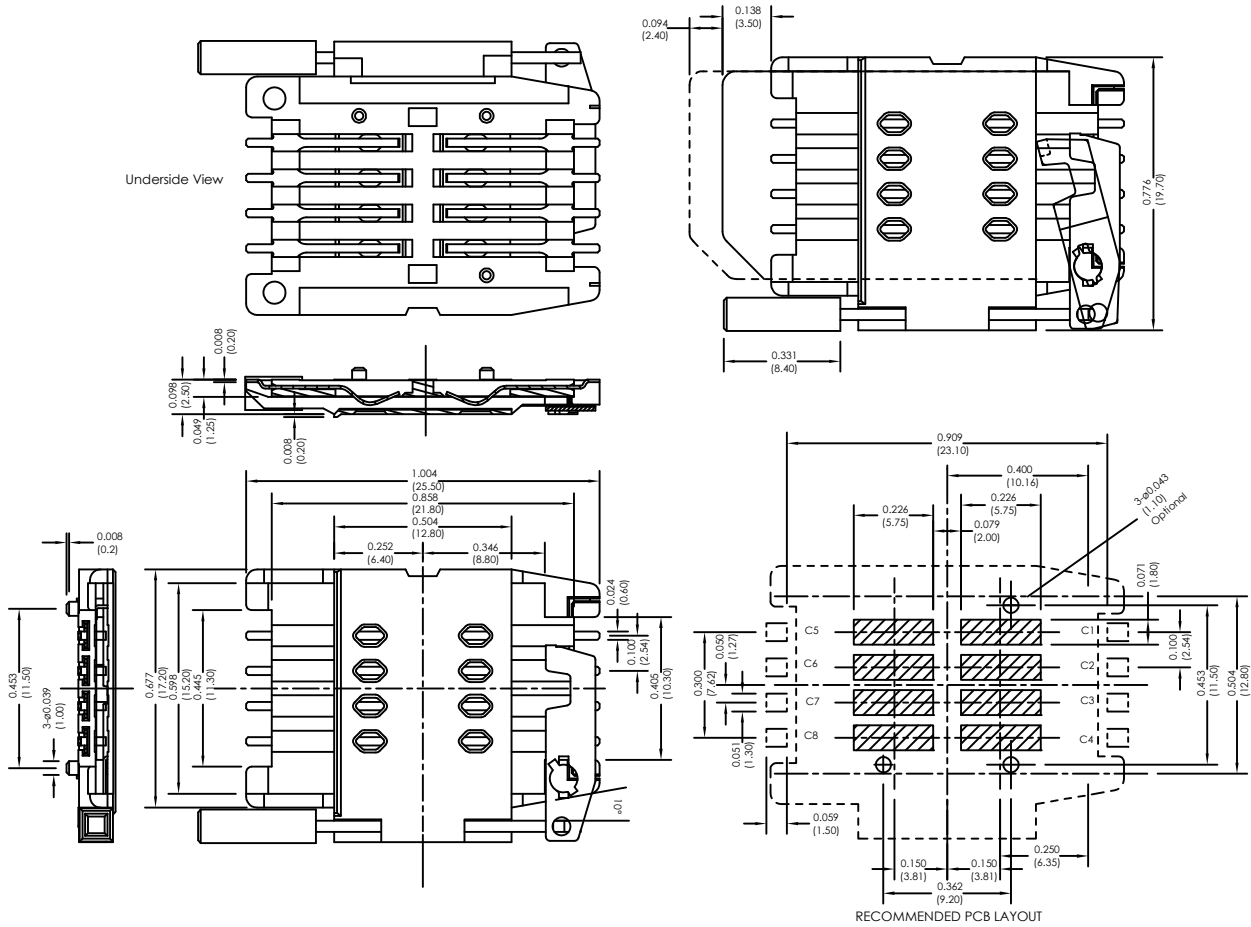


Major League Electronics 8 Pin Surface Mount SIM Connector With Optional Post With Ejector



Ordering Information

SIMS42 **8** - **25** - **1** - **X** - **X** - **LF**

Number of Contacts
8

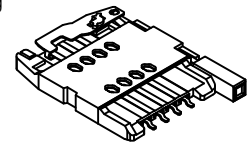
2.5mm	Height	25
	(1.004L x 0.776W x 0.098H inches) (25.50L x 19.70W x 2.50H mm)	

Switch
1 = Without Switch

Lead Free

Packing Information
C = Tube
F = Reel

Locating Peg
1 = With Locating Peg
2 = Without Locating Peg



Weight:	Approx. 1.15g	Insulation Resistance:	> 1000 MΩ / 500 VDC	Storage Temperature:	-40°C, ~ +85°C
Contact Principle:	Friction Technology	Wave:	Not applicable	Storage Humidity:	10% ~ 95% RH
Operating Position:	Shaft Up/Down/Horizontal	VaporPhase:	215°C, 30 sec. Max.	Thermal Shock:	-40°C, ~ +85°C, 5 cycles
Durability:	10,000 Cycles Min.	IR Reflow:	230°C, 15 sec. Max.	Damp Heat:	40°C, 90% RH, 500HR
Insulation Material:	Thermoplastic, UL94V-0	Manual Soldering:	360°C, 3 sec. Max.	Salt-Mist:	35°C, 5% NaCl, 48HR
Contact Material:	Gold plating with 3u" Min.	Operating Temperature:	-40°C, ~ +85°C		
Contact Resistance:	50 mΩ typical / 100 mΩ Max.	Operating Humidity:	10% ~ 95% RH		

SIMS42 SERIES

8 Pin Surface Mount SIM Connector
With Optional Post With Ejector

19 APR 07

Scale
NTS

UNLESS OTHERWISE SPECIFIED
DIMENSIONS IN INCHES (MM)
TOLERANCES ARE:
NO DECIMALS ±0.3
ONE PLACE DECIMALS ±0.25
TWO PLACE DECIMALS ±0.15
ANGLES
±1°



4235 Earnings Way, New Albany, Indiana, 47150, USA
1-800-782-3486 (USA/Canada/Mexico)
Tel: 812-944-7244
Fax: 812-944-7268
E-mail: mle@mlelectronics.com
Web: www.mlelectronics.com

Revision
B

Sheet
1/2

Revisions

Revision B - (23rd Jul 2010)

Plating Information added to specification
Packing Information option added; Reel

SIMS42 SERIES

8 Pin Surface Mount SIM Connector
With Optional Post With Ejector

19 APR 07

Scale
NTS

UNLESS OTHERWISE SPECIFIED
DIMENSIONS IN INCHES (MM)

TOLERANCES ARE:

NO DECIMALS ± 0.3
ONE PLACE DECIMALS ± 0.25
TWO PLACE DECIMALS ± 0.15

ANGLES
 $\pm 1^\circ$



4235 Earnings Way, New Albany, Indiana, 47150, USA
1-800-782-3486 (USA/Canada/Mexico)

Tel: 812-944-7244

Fax: 812-944-7268

E-mail: mle@mlelectronics.com

Web: www.mlelectronics.com

Revision
B

Sheet
2/2