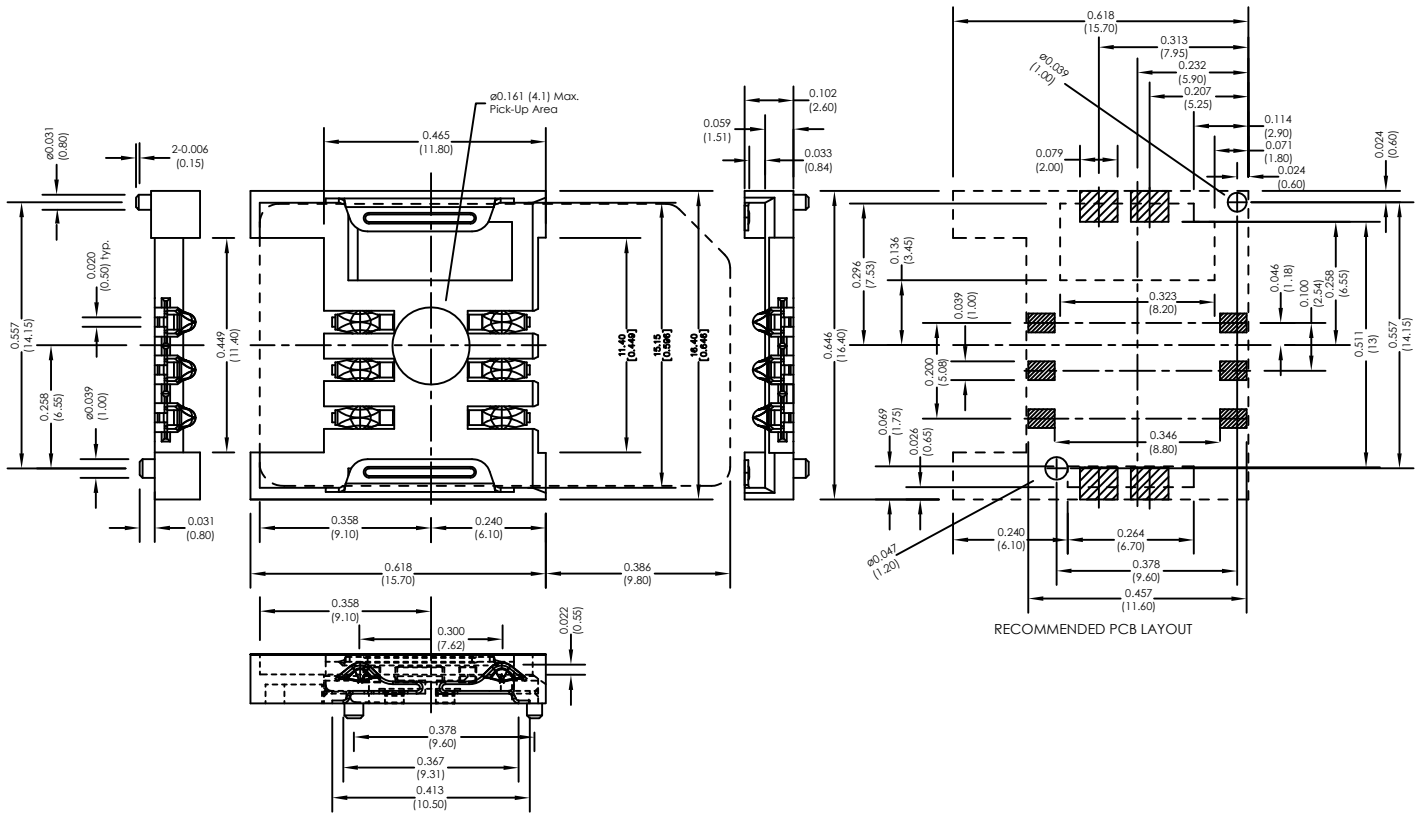


Major League Electronics 6 Pin Surface Mount SIM Connector With Optional Post



Ordering Information

SIMS29 **6** - **26** - **1** - **X** - **X** - **LF**

Number of Contacts
6

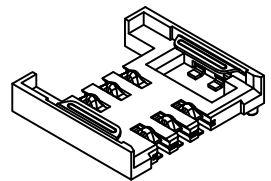
Height	
2.6mm	(0.618L x 0.646W x 0.102H inches) (15.70L x 16.40W x 2.60H mm)
	26

Switch
1 = Without Switch

Lead Free

Packing Information
C = Tube
F = Reel

Locating Peg
1 = With Locating Peg
2 = Without Locating Peg



Weight:	Approx. 0.55g	Insulation Resistance:	> 1000 MΩ / 500 VDC	Storage Temperature:	-40°C, ~ +85°C
Contact Principle:	Friction Technology	Wave:	Not applicable	Storage Humidity:	10% ~ 95% RH
Operating Position:	Shaft Up/Down/Horizontal	VaporPhase:	215°C, 30 sec. Max.	Thermal Shock:	-40°C, ~ +85°C, 5 cycles
Durability:	100,000 Cycles Min.	IR Reflow:	230°C, 15 sec. Max.	Damp Heat:	40°C, 90% RH, 500HR
Insulation Material:	LCP	Manual Soldering:	360°C, 3 sec. Max.	Salt-Mist:	35°C, 5% NaCl, 48HR
Contact Material:	Gold plating with 3u" Min.	Operating Temperature:	-40°C, ~ +85°C		
Contact Resistance:	50 mΩ typical / 100 mΩ Max.	Operating Humidity:	10% ~ 95% RH		

SIMS29 SERIES

6 Pin Surface Mount SIM Connector
With Optional Post

19 APR 07

Scale
NTS

UNLESS OTHERWISE SPECIFIED
DIMENSIONS IN INCHES (MM)
TOLERANCES ARE:
NO DECIMALS ±0.1
ONE PLACE DECIMALS ±0.07
TWO PLACE DECIMALS ±0.05
ANGLES
±0.5°

Major League
ELECTRONICS

4235 Earnings Way, New Albany, Indiana, 47150, USA
1-800-782-3486 (USA/Canada/Mexico)
Tel: 812-944-7244
Fax: 812-944-7268
E-mail: mle@mlelectronics.com
Web: www.mlelectronics.com


Revision
B

Sheet
1/2

Revisions

Revision B - (17th Jun 2010)

Plating Information added to specification
Packing Information option added; Reel

<p>UNLESS OTHERWISE SPECIFIED DIMENSIONS IN INCHES (MM)</p> <p>TOLERANCES ARE:</p> <p>NO DECIMALS ±0.1 ONE PLACE DECIMALS ±0.07 TWO PLACE DECIMALS ±0.05</p> <p>ANGLES ±0.5°</p>	<p>SIMS29 SERIES</p> 	<p>6 Pin Surface Mount SIM Connector With Optional Post</p> <p>4235 Earnings Way, New Albany, Indiana, 47150, USA 1-800-782-3486 (USA/Canada/Mexico) Tel: 812-944-7244 Fax: 812-944-7268 E-mail: mle@mlelectronics.com Web: www.mlelectronics.com</p>	<p>19 APR 07</p>	<p>Scale NTS</p> <p>Revision B</p> <p>Sheet 2/2</p>
--	---	---	-------------------------	---