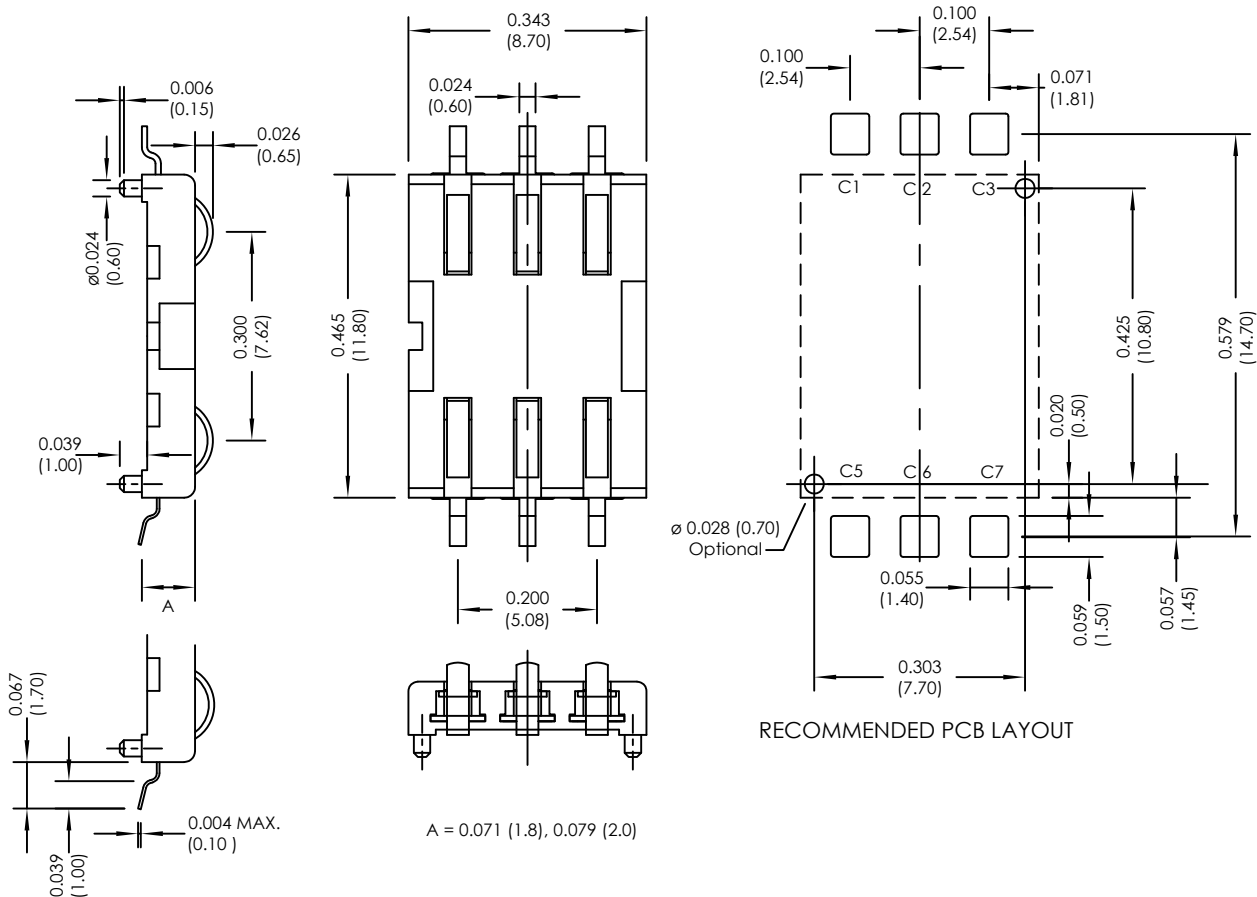


# Major League Electronics 8 Pin Surface Mount SIM Connector With Optional Post



## Ordering Information

SIMS24 **6** - **XX** - **1** - **X** - **X** - **LF**

Number of Contacts  
6

	Height	
1.8mm	(0.465L x 0.343W x 0.071H inches) (11.80L x 8.70W x 1.80H mm)	18
2.0mm	(0.465L x 0.343W x 0.079H inches) (11.80L x 8.70W x 2.00H mm)	20

Switch  
1 = Without Switch

Lead Free

Packing Information

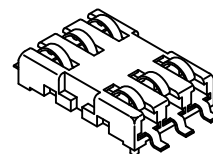
C = Tube

F = Reel

Locating Peg

1 = With Locating Peg

2 = Without Locating Peg



Weight:	Approx. 0.30g	Insulation Resistance:	> 1000 MΩ / 500 VDC	Storage Temperature:	-40°C, ~ +85°C
Contact Principle:	Friction Technology	Wave:	Not applicable	Storage Humidity:	10% ~ 95% RH
Operating Position:	Shaft Up/Down/Horizontal	VaporPhase:	215°C, 30 sec. Max.	Thermal Shock:	-40°C, ~ +85°C, 5 cycles
Durability:	100,000 Cycles Min.	IR Reflow:	230°C, 15 sec. Max.	Damp Heat:	40°C, 90% RH, 500HR
Insulation Material:	Thermoplastic, UL94V-0	Manual Soldering:	360°C, 3 sec. Max.	Salt-Mist:	35°C, 5% NaCl, 48HR
Contact Material:	Gold plating with 3u" Min.	Operating Temperature:	-40°C, ~ +85°C		
Contact Resistance:	50 mΩ typical / 100 mΩ Max.	Operating Humidity:	10% ~ 95% RH		

## SIMS24 SERIES

6 Pin Surface Mount SIM Connector  
With Optional Post

19 APR 07

Scale  
NTS

UNLESS OTHERWISE SPECIFIED  
DIMENSIONS IN INCHES (MM)  
TOLERANCES ARE:  
NO DECIMALS ±0.3  
ONE PLACE DECIMALS ±0.25  
TWO PLACE DECIMALS ±0.15



4235 Earnings Way, New Albany, Indiana, 47150, USA  
1-800-782-3486 (USA/Canada/Mexico)  
Tel: 812-944-7244  
Fax: 812-944-7268  
E-mail: mle@mlelectronics.com  
Web: www.mlelectronics.com


Revision  
B

Sheet  
1/2

# Revisions

Revision B - (17th Jun 2010)

Plating Information added to specification  
Packing Information option added; Reel

<p>UNLESS OTHERWISE SPECIFIED DIMENSIONS IN INCHES (MM)</p> <p>TOLERANCES ARE:</p> <p>NO DECIMALS <math>\pm 0.3</math> ONE PLACE DECIMALS <math>\pm 0.25</math> TWO PLACE DECIMALS <math>\pm 0.15</math></p> <p>ANGLES <math>\pm 1^\circ</math></p>	<p><b>SIMS24 SERIES</b></p> 	<p>6 Pin Surface Mount SIM Connector With Optional Post</p> <p>4235 Earnings Way, New Albany, Indiana, 47150, USA 1-800-782-3486 (USA/Canada/Mexico) Tel: 812-944-7244 Fax: 812-944-7268 E-mail: <a href="mailto:mle@mlelectronics.com">mle@mlelectronics.com</a> Web: <a href="http://www.mlelectronics.com">www.mlelectronics.com</a></p>	<p><b>19 APR 07</b></p>	<p>Scale NTS</p> <p>Revision B</p> <p>Sheet 2/2</p>
---	---	---	-------------------------	---