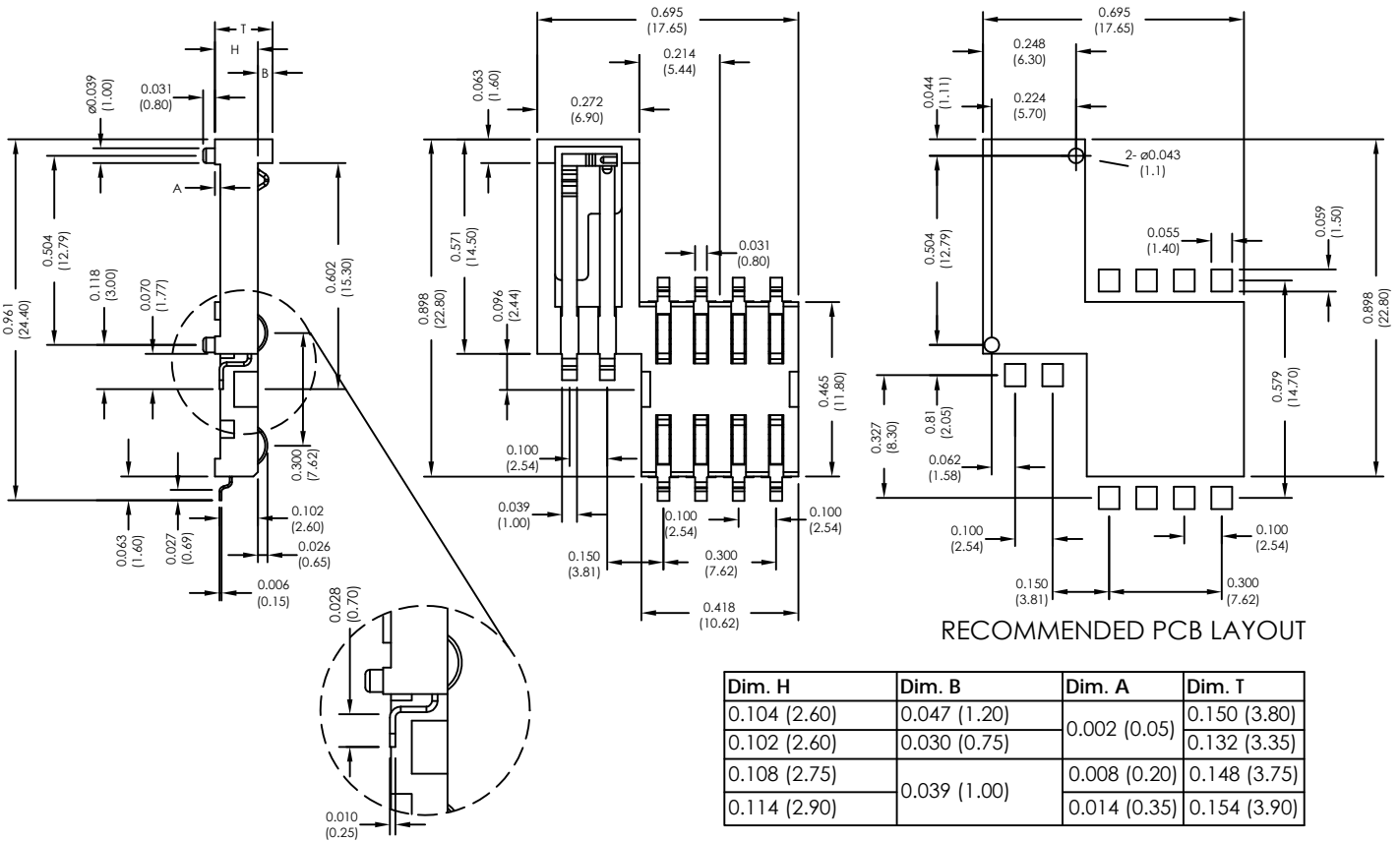


Major League Electronics 8 Pin Surface Mount SIM Connector With Switch and Post



Ordering Information

SIMS14 **8** - **XX** - **2** - **1** - **XX** - **XX** - **LF**

Number of Contacts
8

Lead Free

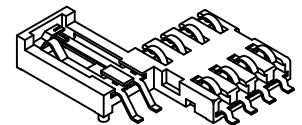
Height		
2.6mm	(1.134L x 0.695W x 0.102H inches) (28.80L x 17.65W x 2.60H mm)	26
2.75mm	(1.134L x 0.695W x 0.108H inches) (28.80L x 17.65W x 2.75H mm)	27
2.9mm	(1.134L x 0.695W x 0.114H inches) (28.80L x 17.65W x 2.90H mm)	29

Switch
2 = With Switch (normally open)

Stopper Height 'B'	
Where height = 2.6mm (0.102")	
1	1 = 1.2mm (0.047")
2	2 = 0.75mm (0.030")
Where height = 2.75mm (0.108") / 2.9mm (0.114")	
3	3 = 1.0mm (0.039")

Packing Information
B = Tray
F = Reel

Locating Peg
1 = With Locating Peg



Weight:	Approx. 0.75g	Insulation Resistance:	> 1000 MΩ/ 500 VDC	Operating Humidity:	10% ~ 95% RH
Contact Principle:	Friction Technology	Switch Type:	Blade	Storage Temperature:	-40°C, ~ +85°C
Operating Position:	Shaft Up/Down/Horizontal	Wave:	Not applicable	Storage Humidity:	10% ~ 95% RH
Durability:	100,000 Cycles Min.	VaporPhase:	215°C, 30 sec. Max.	Thermal Shock:	-40°C, ~ +85°C, 5 cycles
Insulation Material:	Thermoplastic, UL94V-0	IR Reflow:	230°C, 15 sec. Max.	Damp Heat:	40°C, 90% RH, 500HR
Contact Material:	Gold plating with 3u" Min.	Manual Soldering:	360°C, 3 sec. Max.	Salt-Mist:	35°C, 5% NaCl, 48HR
Contact Resistance:	50 mΩ typical / 100 mΩ Max.	Operating Temperature:	-40°C, ~ +85°C		

SIMS14 SERIES

8 Pin Surface Mount SIM Connector
With Switch and Post

18 APR 07

Scale
NTS

UNLESS OTHERWISE SPECIFIED
DIMENSIONS IN INCHES (MM)
TOLERANCES ARE:
NO DECIMALS ±0.3
ONE PLACE DECIMALS ±0.25
TWO PLACE DECIMALS ±0.15
ANGLES
±1°



4235 Earnings Way, New Albany, Indiana, 47150, USA
1-800-782-3486 (USA/Canada/Mexico)
Tel: 812-944-7244
Fax: 812-944-7268
E-mail: mle@mlelectronics.com
Web: www.mlelectronics.com


Revision
B

Sheet
1/2

Revisions

Revision B - (17th Jun 2010)

Plating Information added to specification
Packing Information option added; Reel

<p>UNLESS OTHERWISE SPECIFIED DIMENSIONS IN INCHES (MM)</p> <p>TOLERANCES ARE:</p> <p>NO DECIMALS ±0.3 ONE PLACE DECIMALS ±0.25 TWO PLACE DECIMALS ±0.15</p> <p>ANGLES ±1°</p>	<p>SIMS14 SERIES</p> 	<p>8 Pin Surface Mount SIM Connector With Switch and Post</p> <p>4235 Earnings Way, New Albany, Indiana, 47150, USA 1-800-782-3486 (USA/Canada/Mexico) Tel: 812-944-7244 Fax: 812-944-7268 E-mail: mle@mlelectronics.com Web: www.mlelectronics.com</p>	<p>18 APR 07</p> <p>Scale NTS</p> <p>Revision B</p> <p>Sheet 2/2</p>
--	---	---	---