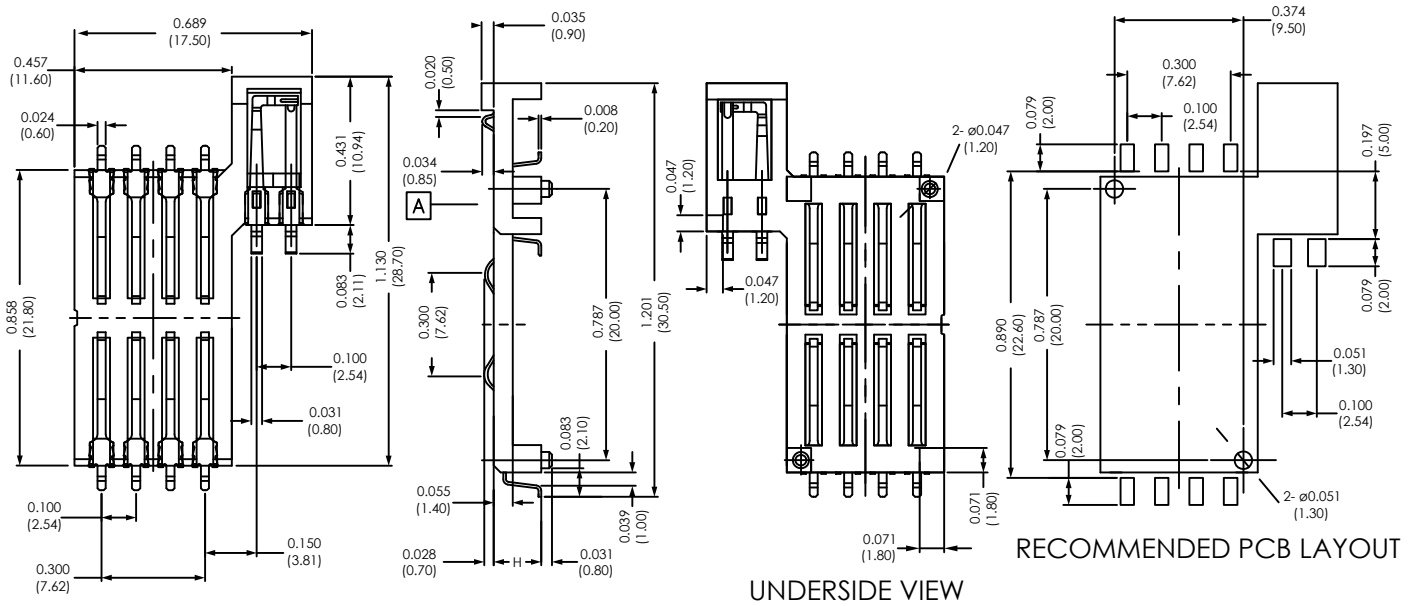


# Major League Electronics 8 Pin Surface Mount SIM Connector With Switch and Post



H = 0.098 (2.5), 0.118 (3.00), 0.138 (3.5), 0.165 (4.2), 0.185 (4.7) (Optional)

## Ordering Information

SIMS13 **8** - **XX** - **2** - **1** - **X** - **LF**

Number of Contacts  
8

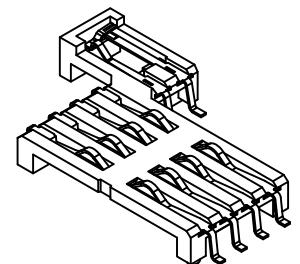
Lead Free  
Packing Information

F = Reel  
B = Tray

Locating Peg  
1 = With Locating Peg

Switch  
2 = With Switch  
(normally open)

	Height	
1.4mm	(1.130L x 0.689W x 0.055H inches) (28.70L x 17.50W x 1.40H mm)	14
2.5mm	(1.130L x 0.689W x 0.098H inches) (28.70L x 17.50W x 2.50H mm)	25
3.0mm	(1.130L x 0.689W x 0.118H inches) (28.70L x 17.50W x 3.00H mm)	30
3.5mm	(1.130L x 0.689W x 0.138H inches) (28.70L x 17.50W x 3.50H mm)	35
4.2mm	(1.130L x 0.689W x 0.165H inches) (28.70L x 17.50W x 4.20H mm)	42
4.7mm	(1.130L x 0.689W x 0.185H inches) (28.70L x 17.50W x 4.70H mm)	47



<b>Weight:</b>	Approx. 0.70g	<b>Insulation Resistance:</b>	> 1000 MΩ / 500 VDC	<b>Operating Humidity:</b>	10% ~ 95% RH
<b>Contact Principle:</b>	Friction Technology	<b>Switch Type:</b>	Blade	<b>Storage Temperature:</b>	-40°C, ~ +85°C
<b>Operating Position:</b>	Shaft Up/Down/Horizontal	<b>Wave:</b>	Not applicable	<b>Storage Humidity:</b>	10% ~ 95% RH
<b>Durability:</b>	100,000 Cycles Min.	<b>VaporPhase:</b>	215°C, 30 sec. Max.	<b>Thermal Shock:</b>	-40°C, ~ +85°C, 5 cycles
<b>Insulation Material:</b>	Thermoplastic, UL94V-0	<b>IR Reflow:</b>	230°C, 15 sec. Max.	<b>Damp Heat:</b>	40°C, 90% RH, 500HR
<b>Contact Material:</b>	Gold plating with 3u" Min.	<b>Manual Soldering:</b>	360°C, 3 sec. Max.	<b>Salt-Mist:</b>	35°C, 5% NaCl, 48HR
<b>Contact Resistance:</b>	50 mΩ typical / 100 mΩ Max.	<b>Operating Temperature:</b>	-40°C, ~ +85°C		

## SIMS13 SERIES

8 Pin Surface Mount SIM Connector  
With Switch and Post

18 APR 07

Scale  
NTS

UNLESS OTHERWISE SPECIFIED  
DIMENSIONS IN INCHES (MM)  
TOLERANCES ARE:  
NO DECIMALS ±0.2  
ONE PLACE DECIMALS ±0.1  
TWO PLACE DECIMALS ±0.01  
THREE PLACE DECIMALS ±0.002  
ANGLES  
±0.5°



4235 Earnings Way, New Albany, Indiana, 47150, USA  
1-800-782-3486 (USA/Canada/Mexico)  
Tel: 812-944-7244  
Fax: 812-944-7268  
E-mail: mle@mlelectronics.com  
Web: www.mlelectronics.com


Revision  
B

Sheet  
1/2

# Revisions

Revision B - (17th Jun 2010)

Plating Information added to specification  
Packing Information option added; Reel

<p>UNLESS OTHERWISE SPECIFIED DIMENSIONS IN INCHES (MM)</p> <p>TOLERANCES ARE: NO DECIMALS ±0.2 ONE PLACE DECIMALS ±0.1 TWO PLACE DECIMALS ±0.01 THREE PLACE DECIMALS ±0.002</p> <p>ANGLES ±0.5°</p>	<p><b>SIMS13 SERIES</b></p> 	<p>8 Pin Surface Mount SIM Connector With Switch and Post</p> <p>4235 Earnings Way, New Albany, Indiana, 47150, USA 1-800-782-3486 (USA/Canada/Mexico) Tel: 812-944-7244 Fax: 812-944-7268 E-mail: <a href="mailto:mle@mlelectronics.com">mle@mlelectronics.com</a> Web: <a href="http://www.mlelectronics.com">www.mlelectronics.com</a></p>	<p><b>18 APR 07</b></p>	<p>Scale NTS</p> <p>Revision B</p> <p>Sheet 2/2</p>
------------------------------------------------------------------------------------------------------------------------------------------------------------------------------------------------------------------------------	-----------------------------------------------------------------------------------------------------------------	-----------------------------------------------------------------------------------------------------------------------------------------------------------------------------------------------------------------------------------------------------------------------------------------------------------------------------------------------------------------------	-------------------------	-----------------------------------------------------------------