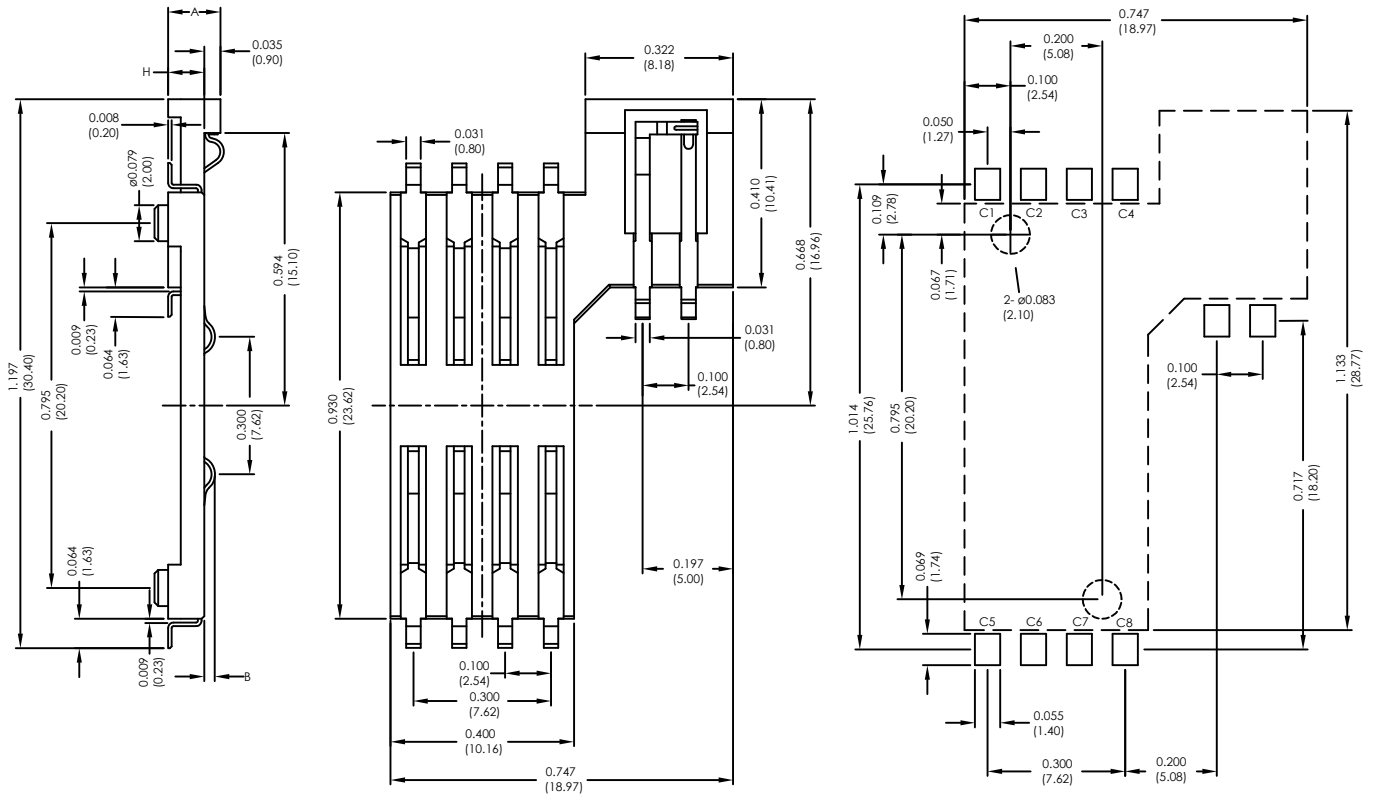


# Major League Electronics 8 Pin Surface Mount SIM Connector With Switch and Post



Base Height	Total Height	Dim. B
H= 0.0787 (2.00)	A= 0.114 (2.90)	0.114 (0.70)
H= 0.061 (1.55)	A= 0.096 (2.45)	0.24 (0.60)
H= 0.512 (1.30)	A= 0.087 (2.20)	

RECOMMENDED PCB LAYOUT

## Ordering Information

SIMS11 **8** - **XX** - **2** - **1** - **X** - **LF**

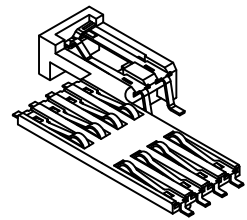
Number of Contacts  
8

	Height	
1.3mm	[1.133L x 0.747W x 0.512H] 28.77L x 18.97W x 1.30H mm	13
1.55mm	[1.133L x 0.747W x 0.061H] 28.77L x 18.97W x 1.55H mm	15
2.0mm	[1.133L x 0.747W x 0.0787H] 28.77L x 18.97W x 2.00H mm	20

Lead Free  
Packing Information  
B = Tray  
F = Reel

Locating Peg  
1 = With Locating Peg

Switch  
2 = With Switch  
(normally open)



<b>Weight:</b>	Approx. 0.65g	<b>Insulation Resistance:</b>	> 1000 MΩ / 500 VDC	<b>Operating Humidity:</b>	10% ~ 95% RH
<b>Contact Principle:</b>	Friction Technology	<b>Switch Type:</b>	Blade	<b>Storage Temperature:</b>	-40°C, ~ +85°C
<b>Operating Position:</b>	Shaft Up/Down/Horizontal	<b>Wave:</b>	Not applicable	<b>Storage Humidity:</b>	10% ~ 95% RH
<b>Durability:</b>	100,000 Cycles Min.	<b>VaporPhase:</b>	215°C, 30 sec. Max.	<b>Thermal Shock:</b>	-40°C, ~ +85°C, 5 cycles
<b>Insulation Material:</b>	Thermoplastic, UL94V-0	<b>IR Reflow:</b>	230°C, 15 sec. Max.	<b>Damp Heat:</b>	40°C, 90% RH, 500HR
<b>Contact Material:</b>	Gold plating with 3u" Min.	<b>Manual Soldering:</b>	360°C, 3 sec. Max.	<b>Salt-Mist:</b>	35°C, 5% NaCl, 48HR
<b>Contact Resistance:</b>	50 mΩ typical / 100 mΩ Max.	<b>Operating Temperature:</b>	-40°C, ~ +85°C		

**SIMS11 SERIES**

8 Pin Surface Mount SIM Connector  
With Switch and Post

18 APR 07

Scale  
NTS

UNLESS OTHERWISE SPECIFIED  
DIMENSIONS IN INCHES (MM)  
TOLERANCES ARE:  
NO DECIMALS ±0.1  
ONE PLACE DECIMALS ±0.07  
TWO PLACE DECIMALS ±0.05



4235 Earnings Way, New Albany, Indiana, 47150, USA  
1-800-782-3486 (USA/Canada/Mexico)  
Tel: 812-944-7244  
Fax: 812-944-7268  
E-mail: mle@mlelectronics.com  
Web: www.mlelectronics.com

Revision  
B

Sheet  
1/2

# Revisions

Revision B - (14th Jun 2010)

Plating Information added to specification

UNLESS OTHERWISE SPECIFIED  
DIMENSIONS IN INCHES (MM)  
TOLERANCES ARE:  
NO DECIMALS  $\pm 0.1$   
ONE PLACE DECIMALS  $\pm 0.07$   
TWO PLACE DECIMALS  $\pm 0.05$   
ANGLES  
 $\pm 0.5^\circ$

**SIMS11 SERIES**

8 Pin Surface Mount SIM Connector  
With Switch and Post

**18 APR 07**

Scale  
NTS



4235 Earnings Way, New Albany, Indiana, 47150, USA  
1-800-782-3486 (USA/Canada/Mexico)  
Tel: 812-944-7244  
Fax: 812-944-7268  
E-mail: [mle@mlelectronics.com](mailto:mle@mlelectronics.com)  
Web: [www.mlelectronics.com](http://www.mlelectronics.com)

Revision  
B

Sheet  
2/2