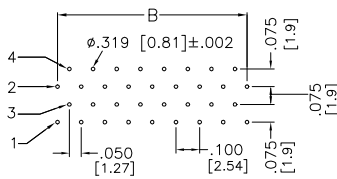
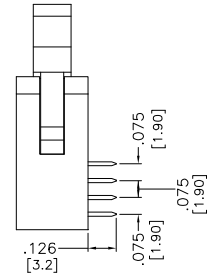
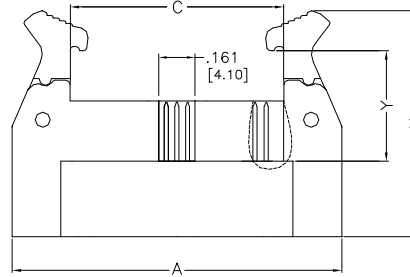
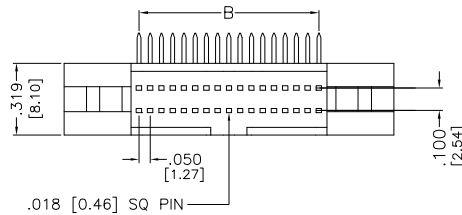


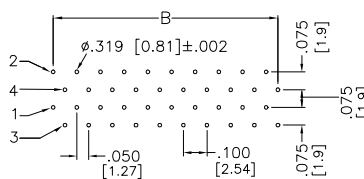
Major League Electronics .050" cl x .100" cl Latching Shrouded Header

ACCESSORIES	X	Y
LONG LATCH	0.992 [25.2]	0.417 [10.6]
SHORT LATCH	0.933 [23.7]	0.415 [8.0]

PINS PER ROW	A	B	C
5	0.965 [24.50]	0.200 [5.08]	0.451 [11.46]
10	1.214 [30.85]	0.450 [11.43]	0.701 [17.81]
13	1.365 [34.66]	0.600 [15.24]	0.851 [21.62]
15	1.465 [37.20]	0.700 [17.78]	0.951 [24.16]
17	1.565 [39.74]	0.800 [20.32]	1.051 [26.70]
20	1.715 [43.55]	0.950 [24.13]	1.201 [30.51]
25	1.965 [49.90]	1.200 [30.48]	1.451 [36.86]
30	2.215 [56.25]	1.450 [36.83]	1.701 [43.21]
34	2.415 [61.33]	1.650 [41.91]	1.901 [48.29]
40	2.715 [68.95]	1.950 [49.53]	2.201 [55.91]
45	2.965 [75.30]	2.200 [55.88]	2.451 [62.26]
50	3.215 [81.65]	2.450 [62.23]	2.701 [68.61]



RECOMMENDED PCB LAYOUT
10, 26, 30, 34, 50, 70, 90



RECOMMENDED PCB LAYOUT
20, 40, 60, 68, 80, 100

Tails may be clipped to achieve desired pin length

Ordering Information

SHTSLR-6 - D - 02 - - - - LF

Pins Per Row
Only available in:
05, 10, 13, 15, 17, 20, 25
30, 34, 40, 45, 50

Double

Style
02 = Tail Length .126 (3.2mm)

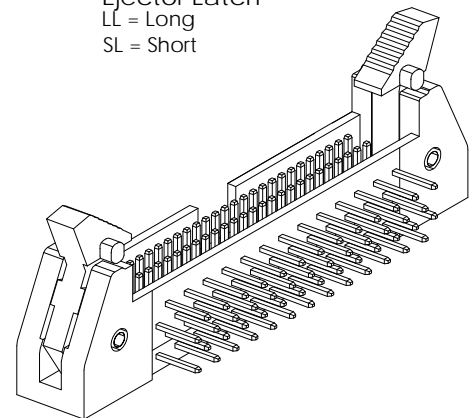
Lead Free

Polarized Position
010 - 100
Leave blank if not needed

Ejector Latch
LL = Long
SL = Short

Plating Options	
- 10µ Gold on Contact Area/Matte Tin on Tail	GT
- 3µ Selective Gold	FT
- Matte Tin all Over	T
- Gold Flash Over Entire Pin	F

Standard = FT



Mates with:
IDS-6

Insulator	PBT, glass reinforced, rated UL 94V-0	Current Rating	1 Amp
Contact	Phosphor Bronze	Dielectric Withstanding	250V AC for one minute
Insulation Resistance	1000 MOHMS min.	Operating Temperature	-40°C to +105°C
Contact Resistance	30 mOHMSmax.	Terminated with	.025" [0.635mm] pitch cable assembly

Products cut to specific sizes are uncancellable/nonreturnable

Parts are subject to change without notice

SHTSLR-6 SERIES

.050" cl x .100" cl Latching Shrouded Header
Right Angle

23 APR 07

Scale
NTS

UNLESS OTHERWISE SPECIFIED
DIMENSIONS IN INCHES (MM)
TOLERANCES ARE:

ONE PLACE DECIMALS ±.100
TWO PLACE DECIMALS ±.010
THREE PLACE DECIMALS ±.005
FOUR PLACE DECIMALS ±.002



4235 Earnings Way, New Albany, Indiana, 47150, USA
1-800-782-3486 (USA/Canada/Mexico)
Tel: 812-944-7244
Fax: 812-944-7268
E-mail: mle@mlelectronics.com
Web: www.mlelectronics.com

Revision
B

Sheet
1/2

Revisions

Revision B - 2nd October 2009

Amendment to pins per row table and ordering grid,
35 option removed

UNLESS OTHERWISE SPECIFIED
DIMENSIONS IN INCHES (MM)
TOLERANCES ARE:
ONE PLACE DECIMALS ±.100
TWO PLACE DECIMALS ±.010
THREE PLACE DECIMALS ±.005
FOUR PLACE DECIMALS ±.002

SHTSLR-6 SERIES

.050" cl x .100" cl Latching Shrouded Header
Right Angle

23 APR 07

Scale
NTS



4235 Earnings Way, New Albany, Indiana, 47150, USA
1-800-782-3486 (USA/Canada/Mexico)

Tel: 812-944-7244
Fax: 812-944-7268

E-mail: mle@mlelectronics.com
Web: www.mlelectronics.com

Revision
B

Sheet
2/2