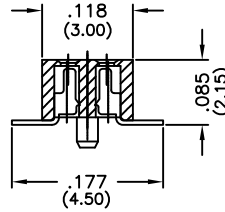
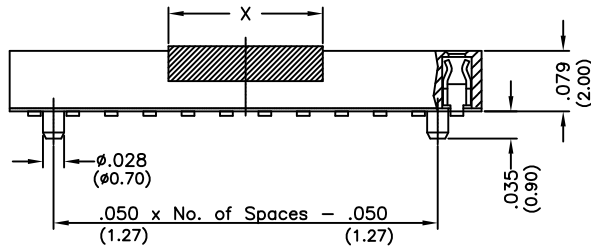
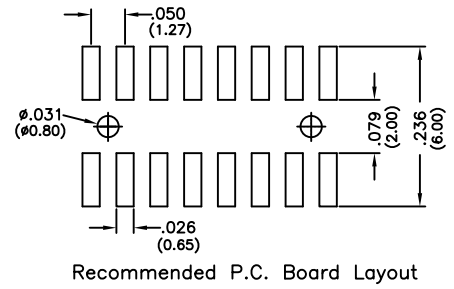
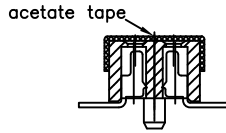
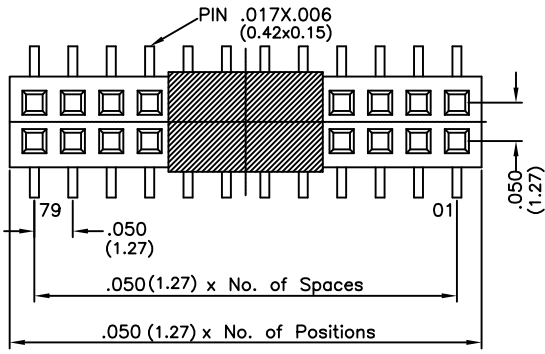


Major League Electronics .050x.050 cl Socket Strip - Low Profile



X	Dim. Note
.197 (5.00)	01~25pins
.394 (10.00)	26~40pins

Tails may be clipped to achieve desired pin length

Ordering Information

LSSHS-5 - D - 06 - - - - - - LF

Pins Per Row
01 - 40

Row Specification
D = Dual Row

Surface Mount

Lead Free

Alignment Pin
Leave blank if not needed
AP = With

Plating Options	
10µ Gold on Contact Area / Flash on Tail	G
Matte Tin All Over	T
Gold Flash over Entire Pin	F

Packing Information

TR-P = Tape and Reel with Plastic Pick and Place pad
TB-P = Tube with Plastic Pick and Place pad
TB-0 = Tube without Pick and Place Pad
If left blank, packaging at MLE's discretion
Pad may be metal, mylar or plastic

Polarized Position

Leave blank if not needed
If required, specify empty pin position, e.g. 012 for Pin 12

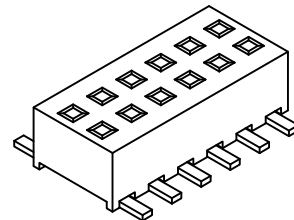
Specifications

Insertion Depth: .050 (1.27) Minimum
Insertion Force - Per Contact - H Plating:
3.8oz. (1.05N) avg. with .016 (0.41) sq. pin
Withdrawal Force - Per Contact - H Plating:
2.0 oz. (0.56N) avg. with 0.16 (0.41) sq. pin
Current Rating: 1.5 Ampere
Insulation Resistance: 1000MΩ Min.
Dielectric Withstanding: 300V AC
Contact Resistance: 20 mΩ Max.
Operating Temperature: -40°C to + 105°C
Max. Process Temperature:
Peak: 260°C up to 10 secs.
Process: 230°C up to 60 secs.
Wave: 260°C up to 6 secs.
Reflow: 260°C up to 10 secs.
Manual Solder: 350°C up to 5 secs.

Materials

Contact Material: Phosphor Bronze
Insulator Material: Nylon 6T
Plating: Au or Sn over 50µ" (1.27) Ni

Mates with:
BSTC,
BSTCM,
BSTS,
TBSTC,
TBSTCM,
TBSTS,
TSHC,
TSHR,
TSHS,
TSHSCM,
TTSCH,
TTSHR,
TTSHS,
TTSHSM



Products cut to specific sizes are uncancellable/nonreturnable

Parts are subject to change without notice

LSSHS-5-D-06 SERIES

.050x.050 cl Dual Row
Socket Strip - Low Profile

07 FEB 07

Scale
NTS

UNLESS OTHERWISE SPECIFIED
DIMENSIONS IN INCHES (MM)
TOLERANCES ARE:

ONE PLACE DECIMALS ±.100
TWO PLACE DECIMALS ±.010
THREE PLACE DECIMALS ±.005
FOUR PLACE DECIMALS ±.0020
ANGLES
3/3



4235 Earnings Way, New Albany, Indiana, 47150, USA
1-800-782-3486 (USA/Canada/Mexico)
Tel: 812-944-7244
Fax: 812-944-7268
E-mail: mle@mlelectronics.com
Web: www.mlelectronics.com

Revision
E

Sheet
1/2

Revisions

Revision E - (22nd December 2011)

Part number re-ordered, alignment pin option moved after packing options as per standardized MLE part numbering format.

Revision D - (5th March 2010)

Footprint dimension changed

Was .197" (5.00mm)


Now .177" (4.50mm)

Revision C - (9th March 2009)

New Drawing added to replace previous version with additional feature of an optional Alignment Pin

Revision B - (2nd May 2008)

Plating styles 'GT' and 'H' removed

	LSSHS-5-D-06 SERIES	.050x.050 cl Dual Row Socket Strip - Low Profile	07 FEB 07	Scale NTS
<small>UNLESS OTHERWISE SPECIFIED DIMENSIONS IN INCHES (MM) TOLERANCES ARE: ONE PLACE DECIMALS ±.100 TWO PLACE DECIMALS ±.010 THREE PLACE DECIMALS ±.005 FOUR PLACE DECIMALS ±.0020 ANGLES ±.5°</small>		4235 Earnings Way, New Albany, Indiana, 47150, USA 1-800-782-3486 (USA/Canada/Mexico) Tel: 812-944-7244 Fax: 812-944-7268 E-mail: mle@mlelectronics.com Web: www.mlelectronics.com	Revision E	
			Sheet 2/2	